

FOR SALE

The Sanborn House

Pasadena, Ca



65 North Catalina Avenue, Pasadena, CA 91106

HIGHLIGHTS

- 6,827 SQ. FT. Office Building
- 3 Separate Buildings on Parcel
- Beautiful Craftsman Designed by Greene & Greene
- Centrally Located in the Playhouse
- Easy Access To the 210, 134 & 110 Freeways
- **Purchase Price:** \$2,100,000.00
- **Price Per Sq. Ft.:** \$307.60

AREA

The Sanborn House is located in the Playhouse District, less than one block north of Colorado and two blocks east of Lake Ave. on Catalina Ave. It is in close proximity to Paseo Colorado, South Lake Ave., Fuller Theological Seminary & Caltech. There are many amenities nearby, including, restaurants and shopping. Street parking and public parking lot adjacent with spaces available at \$40 per month.

NAI Capital

Commercial Real Estate Services, Worldwide.

No warranty, express or implied, is made as to the accuracy of the information contained herein. This information is submitted subject to errors, omissions, change of price, rental or other conditions, withdrawal without notice, and is subject to any special listing conditions imposed by our principals. Cooperating brokers, buyers, tenants and other parties who receive this document should not rely on it, but should use it as a starting point of analysis, and should independently confirm the accuracy of the information contained herein through a due diligence review of the books, records, files and documents that constitute reliable sources of the information described herein.

Marie Taylor

DRE #01233430

Direct: 626.285.2532

Mobile: 626.222.7449

mtaylor@naicapital.com

225 South Lake Avenue, Suite 1170

Pasadena, CA 91101

Tel: 626 564 4800

Fax: 626 285 2709

65 North Catalina Avenue

Pasadena, CA 91106



PROPERTY

The property includes an approx. 4,456 square foot two-story Craftsman designed by Charles Greene & Henry Greene in 1903, an approx. 1,589 square foot two-story Victorian/Craftsman Transitional designed by Charles F Driscoll in 1904 and an approx. 782 square foot carriage house converted into a loft also designed by Charles Greene & Henry Greene in 1903. The buildings are currently used as office space by the Planetary Society. The total square footage is approx. 6,827 square feet. The 1st Floor of the main building have 6 offices, conference room, 2 restrooms, waiting area, reception & kitchen. 2nd Floor of the main building has 8 offices and 2 restrooms. The cottage has 5 offices, storage room, kitchen and a restroom. The carriage house has an open area, mezzanine and restroom.

NAI Capital

Commercial Real Estate Services, Worldwide.

No warranty, express or implied, is made as to the accuracy of the information contained herein. This information is submitted subject to errors, omissions, change of price, rental or other conditions, withdrawal without notice, and is subject to any special listing conditions imposed by our principals. Cooperating brokers, buyers, tenants and other parties who receive this document should not rely on it, but should use it as a starting point of analysis, and should independently confirm the accuracy of the information contained herein through a due diligence review of the books, records, files and documents that constitute reliable sources of the information described herein.

Marie Taylor

DRE #01233430

Direct: 626.285.2532

Mobile: 626.222.7449

mtaylor@naicapital.com

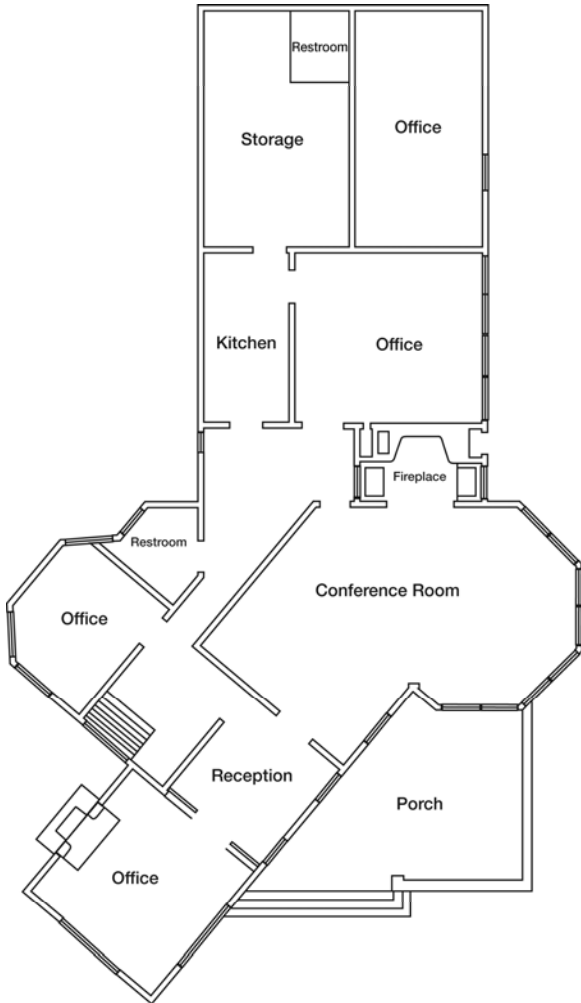
225 South Lake Avenue, Suite 1170

Pasadena, CA 91101

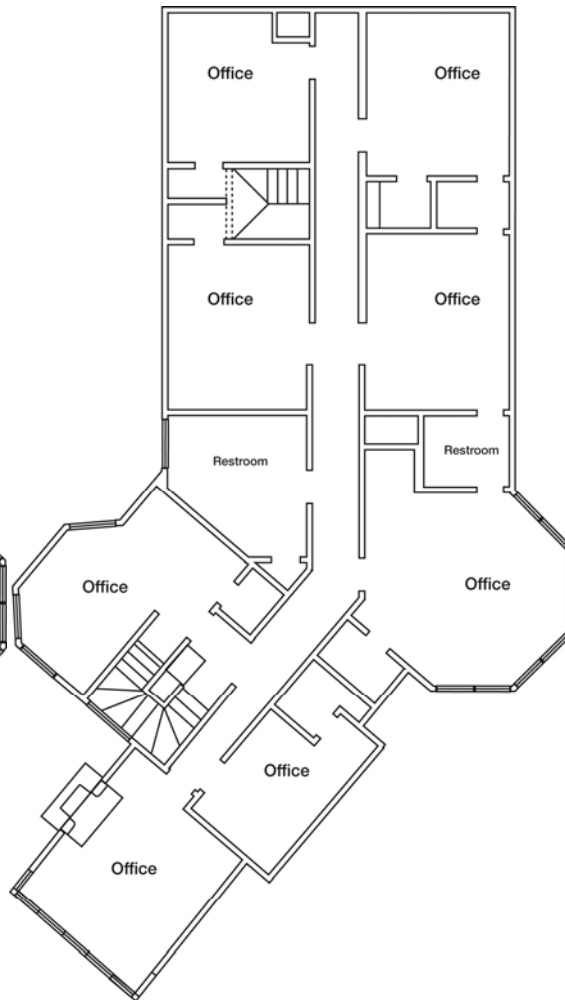
Tel: 626 564 4800

Fax: 626 285 2709

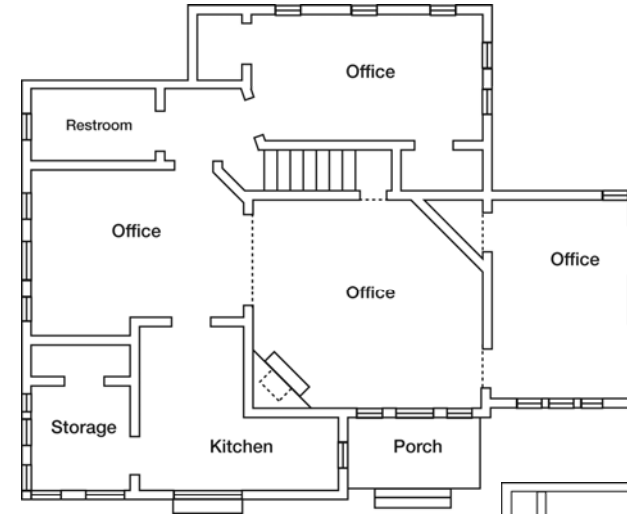
65 N. Catalina Ave.
Main Building, First Floor
Approx. 2,904 Sq. Ft.



65 N. Catalina Ave.
Main Building, Second Floor
Approx. 2,362 Sq. Ft.



65 N. Catalina Ave.
Cottage
Approx. 1,589 Sq. Ft.



65 N. Catalina Ave.
Carriage House
Approx. 782 Sq. Ft.

